

Working in Roof/Ceiling Space

Guidance for Bay Building Estimators, Project Coordinator and Supervisors when Working in Roof/Ceiling Space

COMPLETE ELECTRICAL ISOLATION OF THE PROPERTY

Issue

Complete Electrical Isolation of the entire property is needed prior to accessing the ceiling space.

Hazard

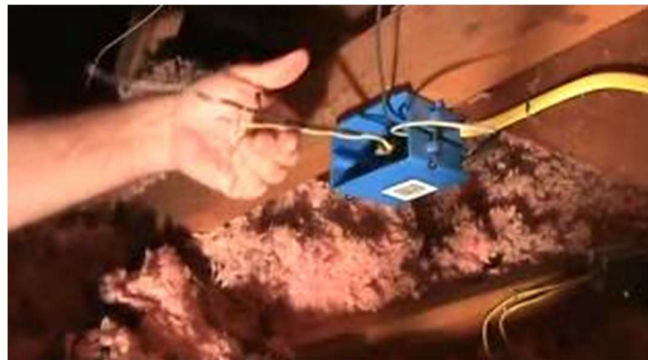
Following are the Risks

- Old or damaged wiring not properly insulated.
- Junction boxes, fittings, or terminals left exposed.
- Extension cords or non-compliant DIY wiring.
- Solare Panel main wirings.

Risk

Following are the Risks

- Electric Shock
- Electrocution
- Fire due to spark of naked wires
- Exposure to Asbestos



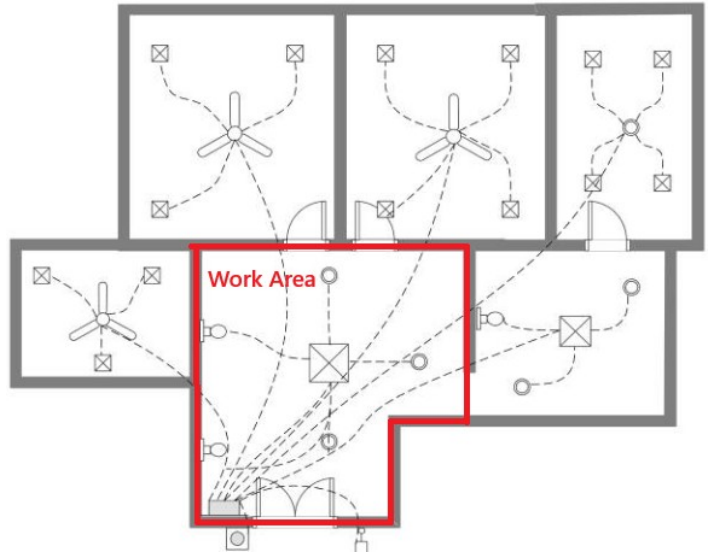
Working in Roof/Ceiling Space

Guidance for Bay Building Estimators, Project Coordinator and Supervisors when Working in Roof/Ceiling Space

Why we need complete Property Isolation

Please refer to the attached picture, which shows numerous wires crossing through our work area and connecting other parts of the property. Isolating only the work area will still leave a considerable number of live wires running across the ceiling above.

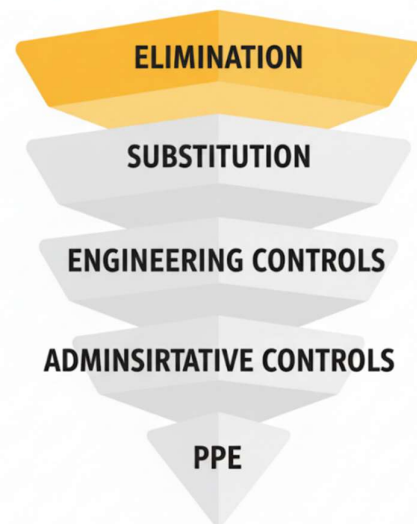
Climbing into the ceiling space with multiple live wires crossing the work area presents a potential risk of contact with damaged wiring, which could lead to electrocution.



Actions Required:

Before entering the ceiling, please make sure to organize the following through Class A Electrician.

- Carry out the risk management and follow the hierarchy of control. Understand if we can complete the works without entering the roof/ceiling space.
- If we still need to enter the roof/ceiling space, please follow the steps.
 - Engage a licensed A class electrician
 - Complete Electrical isolation of the property from main electrical board. Isolation may include lock out/tag out of the main electrical board.
 - We also make sure that electrical cables connecting Solar Panels should also be isolated (physical isolation from the solar panel).



Working in Roof/Ceiling Space

Guidance for Bay Building Estimators, Project Coordinator and Supervisors when Working in Roof/Ceiling Space

Caution - Accessing Roof/Ceiling Space

When accessing the roof/ceiling space consider other hazards that maybe present.

- heat and humidity may cause heat stress, avoid accessing roof/ceiling space in hot weather conditions (early morning starts better on high temperature days)
- Take additional lighting (e.g. torch)
- Step carefully on ceiling joists or other beams – not the ceiling material (i.e. Gyprock sheeting) – to avoid risk of falling or injury maintain three points of contact (foot on each truss and hand on girder)
- Be aware of the location of electrical cables, fittings and equipment and avoiding contact with them.
- Identify wires not safely terminated for make-safe
- Assess the roof/ceiling space for asbestos materials – in particular fibrous lagging and insulation in houses that pre-date 1990's. If not sure have a hygienist assess the materials.

