



# CASE STUDY

## HERITAGE SHOP FRONTS

GAWLER, SA

A B double truck impacted the corner of the shop frontage of this Heritage listed building. The canopy was taken off, resulting in structural cracking to the façade. Two days after the initial make safe works were carried out, a second vehicle impacted the existing props and safety bollards surrounding the affected area.

The incident took place in the main vehicle thoroughfare through Gawler, SA, meaning that road closure was not possible during business hours due to non-stop traffic and pedestrian access. To accommodate this, it was necessary to implement night and weekend works/night road closures for scaffold set up and removal.

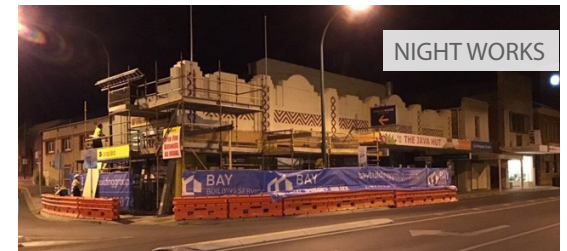
The Bay Building Services Major Projects Team worked alongside the Council to ensure that all works were completed to Heritage and Council requirements. In amongst these requirements, it was important for the Major Projects Team to ensure that they could complete works without creating disruption to the surrounding businesses. The tenant was originally advised that his business would need to be closed for 6-8 weeks to facilitate works, however due to the coordination of trades and management planning from the Major Projects Team, it was determined that works could be completed and a pedestrian tunnel installed allowing the business to function as per usual.

Works required included replacing the internal steel beam to provide adequate structural support as per the engineers report to the masonry front pier. Rebuild of the masonry pier front to heritage standards as well as rebuilding the front shop canopy and internal shop repairs. 16 trades were coordinated by the Major Projects Team to facilitate works and guarantee that works would be completed to heritage standards.

The building was originally a picture theatre and is over 100 years old and it now has a new lease on life. The project was delivered within budget and earlier than anticipated, making for very happy tenants.



COMPLETED FACADE



NIGHT WORKS

BBG TEAM: Bay Major Projects  
South Australia  
PROJECT TYPE: Vehicle Impact Damage  
PROJECT SIZE: 3 Shop Fronts  
BUILDING TYPE: Retail  
PROJECT VALUE: \$132k



A PIECE OF HISTORY

