



**BAY**  
BUILDING SERVICES

## MANAGING SITE WORKS DURING COVID-19

**1**

### FLU-LIKE SYMPTOMS

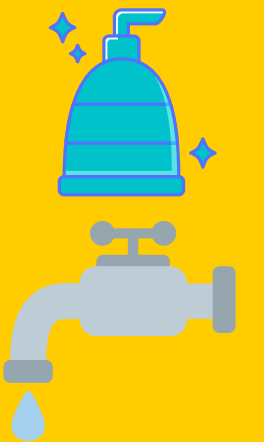
- Do not attend site if you are in self-isolation due to government health guidelines.
- Do not attend site if you have flu-like symptoms.



**2**

### HYGIENE

- Wash hands regularly using soap and water or hand sanitiser
- Use an outdoor tap or accessible water facility (asking occupant)



**3**

### ZERO CONTACT WITH OCCUPANT

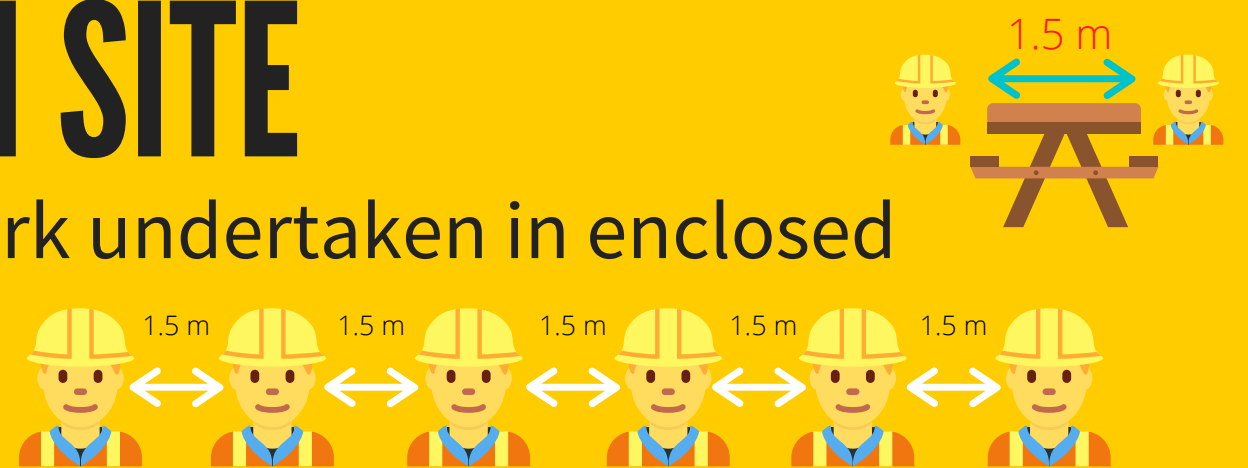
- Phone calls/emails (avoid direct contact)
- Keep works away from occupant (separate rooms)
- Use separate entrances where applicable.
- Keep 1.5m away from occupant at all times.



**4**

### SOCIAL DISTANCING ON SITE

- 1 person per 4 sqm for building work undertaken in enclosed spaces.
- Maintain 1.5m social distancing.
- No more than six workers on site wherever possible.



SUPERVISOR NAME & CONTACT NUMBER



**NEED MORE  
INFORMATION  
ABOUT COVID-19  
MANAGEMENT?  
SCAN HERE**



HIA Covid 19 Guides



Bay Building Services  
Policies

24HRS 1300 766 216  
baybuildinggroup.com.au